

# **Message handbook for UIC Railway Energy Metered Data for Billing**

## **Implementation guide for UTILITY TIME SERIES MESSAGE**

EDIFACT-message:	UTILTS E23
EDIFACT-version:	D
EDIFACT-release:	05A
IG-status:	Approved
IG-version:	1.0
IG-revision:	A
IG-date:	October 12 <sup>th</sup> , 2009

**C O N T E N T**

<b>1</b>	<b>INTRODUCTION.....</b>	<b>3</b>
<b>2</b>	<b>GENERAL DESCRIPTION OF THE UTILTS MESSAGE .....</b>	<b>4</b>
2.1	FUNCTIONAL DEFINITION.....	4
2.2	PRINCIPLES .....	4
<b>3</b>	<b>REFERENCES.....</b>	<b>5</b>
3.1	PRECEDENCE.....	5
<b>4</b>	<b>QUALITY ASSURANCE.....</b>	<b>6</b>
4.1	VERSION NUMBER .....	6
4.2	CHANGE LOG.....	6
<b>5</b>	<b>SPECIAL CONDITIONS.....</b>	<b>6</b>
<b>6</b>	<b>OVERVIEW OF THE MESSAGE.....</b>	<b>7</b>
6.1	CLASS DIAGRAM FOR E23 REQUEST FOR METERED DATA .....	7
6.2	CLASS DIAGRAM FOR ERR NEGATIVE REPLY.....	7
6.3	CUE LIST .....	8
6.4	MESSAGE DIAGRAM .....	10
6.5	SEGMENT TABLE .....	11
<b>7</b>	<b>DETAILED DESCRIPTION OF THE MESSAGE.....</b>	<b>13</b>
	<b>APPENDIX A – MESSAGE EXAMPLES .....</b>	<b>28</b>
A.1	EXAMPLES TO BE ADDED.....	28

## **1 INTRODUCTION**

This document is an Implementation Guide (IG) for the Utility time series message, to be used for Railway Energy Billing. The IG describes the EDIFACT-message UTILTS (Utility time series message) in detail.

This IG is based on the "Message handbook for ebIX", which contains a set of IG's for different messages used in the energy industry and ebIX common rules and recommendations. The ebIX common rules and recommendations contains common descriptions for the different Implementation Guides. This includes relationships between the different message types, use of codes and code lists, special conditions within and between countries (such as use of time zones), terms and notation, use of header and trailer segments (UNB and UNZ), etc.

The objective of this document is to achieve harmonisation within the European railway and energy industry.

Process descriptions are available in separate modelling document.

## **2 GENERAL DESCRIPTION OF THE UTILTS MESSAGE**

### **2.1 Functional Definition**

The Utilities time series message is sent between data responsible parties in a utilities infrastructure for the purpose of reporting time series and connected technical and/or administrative information.

### **2.2 Principles**

The Utilities time series message may contain time series for metered values, forecasts, estimates, prices, etc. Connected to each time series there may be technical and administrative information, such as characteristics of a meter, exchange rates, etc. Each time series will be identified by the companies and/or locations that are reported, the product and the validity time period. The message may be an initial message and does not require a response.

### 3 REFERENCES

This Implementation guide is based on the following documents.

- [1] UN/EDIFACT directory, D.05A, <http://www.unece.org/trade/untdid/>
- [2] ebIX common rules and recommendations, <http://www.ebix.org/>
- [3] ISO 9735, version 2, 1990.11.01, <http://www.unece.org/trade/untdid/>
- [4] ebIX model for metered data, [www.ebix.org](http://www.ebix.org)
- [5] ebIX Code list, [www.ebix.org](http://www.ebix.org)
- [6] ebIX Core component registry, [www.ebix.org](http://www.ebix.org)
- [7] UIC Leaflet XXX for Exchange of data in connection with cross-border railway energy settlement

#### 3.1 Precedence

If there should be any conflict regarding this Implementation guide or between this Implementation guide and other documents, the following precedence shall be used:

- 1 UN/EDIFACT directory, D.05A [1]
- 2 ebIX common rules and recommendations [2]
- 3 UIC Leaflet XXX for exchange of data in connection with cross-border railway energy settlement **Erreur ! Source du renvoi introuvable.**
- 4 This Implementation guide.

In this Implementation guide the EDIFACT message type is described in different ways. If there should be any conflict regarding the different descriptions, the detailed description in the last chapter should be used.

### 4 QUALITY ASSURANCE

This document is written by EdiSys AS on behalf of the UIC Railway Energy Billing project.

#### 4.1 Version number

The Implementation Guide will have 2 levels of version numbering. This will be Version and Release. In addition there will be a Revision number.

- The Version number (first number) will be updated when there have been major changes like new versions of the message type.
- The Release number will be updated when there have been small changes to the IG, like adding new segments, new data elements etc. within the EDIFACT directory. These changes shall not influence existing implementations.
- The Revision number will be updated when there have been minor changes, like correction of examples, adding new codes etc. These changes shall not influence existing implementations.

#### 4.2 Change log

In addition to minor text corrections the following changes has been made to this version of the IG:

Ver.	Rel.	Rev.	Date	Changes
D05A	0.1	A	28.02.2007	First draft
D05A	1.0	A	05.12.2007	First approved version.

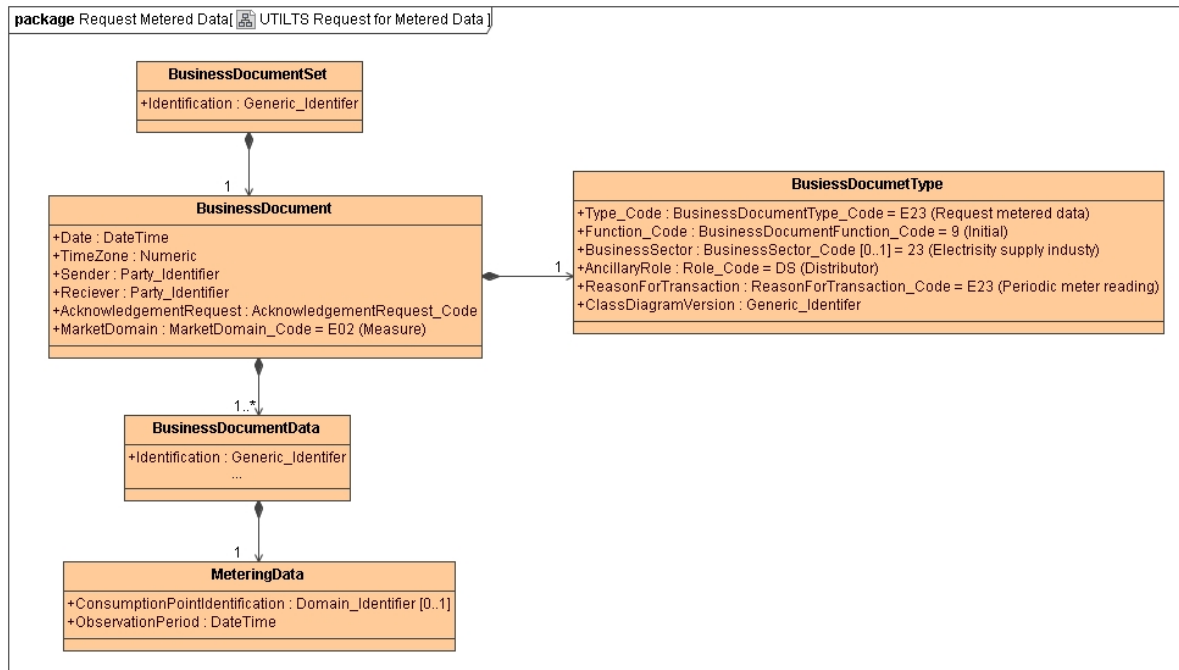
### 5 SPECIAL CONDITIONS

This MIG has been developed for use in exchange of data in connection with cross-border railway energy settlement.

Codes specific for the Railway energy sector is prefixed by an “R”, i.e. “R01 – Location Quality”. These codes should be sent to UN/CEFACT for registration when the project is completed.

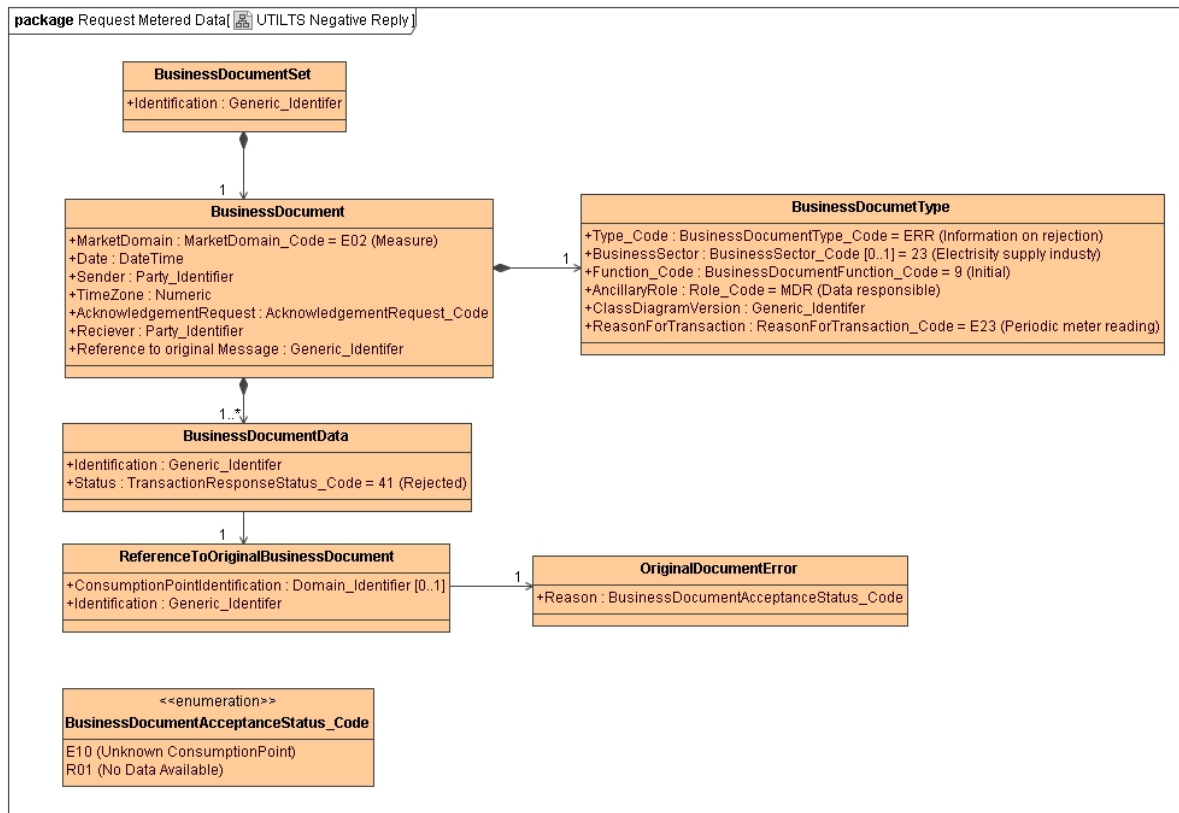
## 6 OVERVIEW OF THE MESSAGE

### 6.1 Class diagram for E23 Request for Metered data



**Figure 1** Class diagram for the Utility time series message Request for Metered Data

### 6.2 Class diagram for ERR Negative reply



**Figure 2** Class diagram for the Utility time series message Negative Response

## 6.3 Cue list

Below is a table describing the EDIFACT message and the relationships to the attributes in the class diagram.

Message header				
	UNH	M	1	(Message reference) (Message type) BusinessDocumentType.ClassDiagramVersion
	BGM	M	1	BusinessDocumentType.Type_Code BusinessDocumentSet.Identification BusinessDocument.AcknowledgementRequest BusinessDocumentType.Function_Code
	DTM	M	2	BusinessDocument.Date BusinessDocument.TimeZone
	MKS	R	1	BusinessDocument.MarketDomain BusinessDocumentType.BusinessSector
	PRC	C	9	Not used
References				
	SG 1	D	1	
	RFF	M	1	BusinessDocument.ReferenceToOriginalMessage
	DTM	C	9	Not used
Message parties				
	SG 2	R	2	
	NAD	M	1	BusinessDocument.Reciever BusinessDocument.Sender
	RFF	C	1	Not used
	ATT	D	1	BusinessDocumentType.AncillaryRole
Contact information				
	SG 3	C	9	Not used
	CTA	M	1	Not used
	COM	C	9	Not used
Currencies / Rate of exchange				
	SG 4	C	99	Not used
	CUX	M	1	Not used
	DTM	C	9	Not used
	STS	C	9	Not used
Message details				
	SG 5	R	99999	
	IDE	M	1	BusinessDocumentData.Identification
	LOC	R	1	MeteringData.ConsumptionPointIdentification ReferenceToOriginalBusinessDocument. ConsumptionPointInformation
	NAD	C	9	Not used
	ALI	C	9	Not used
	LIN	R	1	Not used
	PIA	C	9	Not used
	IMD	C	9	Not used
	DTM	R	2	MeteringData.ObservationPeriod
	PRC	C	9	Not used

# Railway Energy Billing UTILTS E23

STS	R	2	BusinessDocumentType.ReasonForTransaction BusinessDocumentData.Status OriginalDocumentError.Reason
AGR	C	9	Not used
MEA	R	1	Not used
FTX	C	9	Not used
<b>References</b>			
SG 6	C	99	
RFF	M	1	ReferenceToOriginalBusinessDocument.Identification
DTM	C	9	Not used
<b>Characteristics</b>			
SG 7	R	1	Not used
CCI	M	1	Not used
CAV	R	1	Not used
<b>Time series date/time/period</b>			
SG 8	O	99999	Not used
SEQ	M	1	Not used
DTM	C	9	Not used
RFF	C	9	Not used
MOA	C	9	Not used
PCD	C	9	Not used
GPO	R	2	Not used
<b>Characteristics for observation</b>			
SG 9	C	99	Not used
CCI	M	1	Not used
CAV	C	99	Not used
<b>Price</b>			
SG 10	C	9	Not used
PRI	M	1	Not used
CUX	C	9	Not used
<b>Quantity</b>			
SG 11	R	1	Not used
QTY	M	1	Not used
DTM	C	9	Not used
STS	R	2	Not used
SG 12	C	99	Not used
CCI	M	1	Not used
CAV	C	99	Not used
<b>Price</b>			
SG 13	C	9	Not used
PRI	M	1	Not used
CUX	C	9	Not used
<b>Message trailer</b>			
CNT	O	1	Not used
UNT	M	1	Message trailer

## 6.4 Message diagram

The Message diagram below shows the subset of the standard EDIFACT message that is used in this IG. The segments and segment groups in grey are not used in this subset.

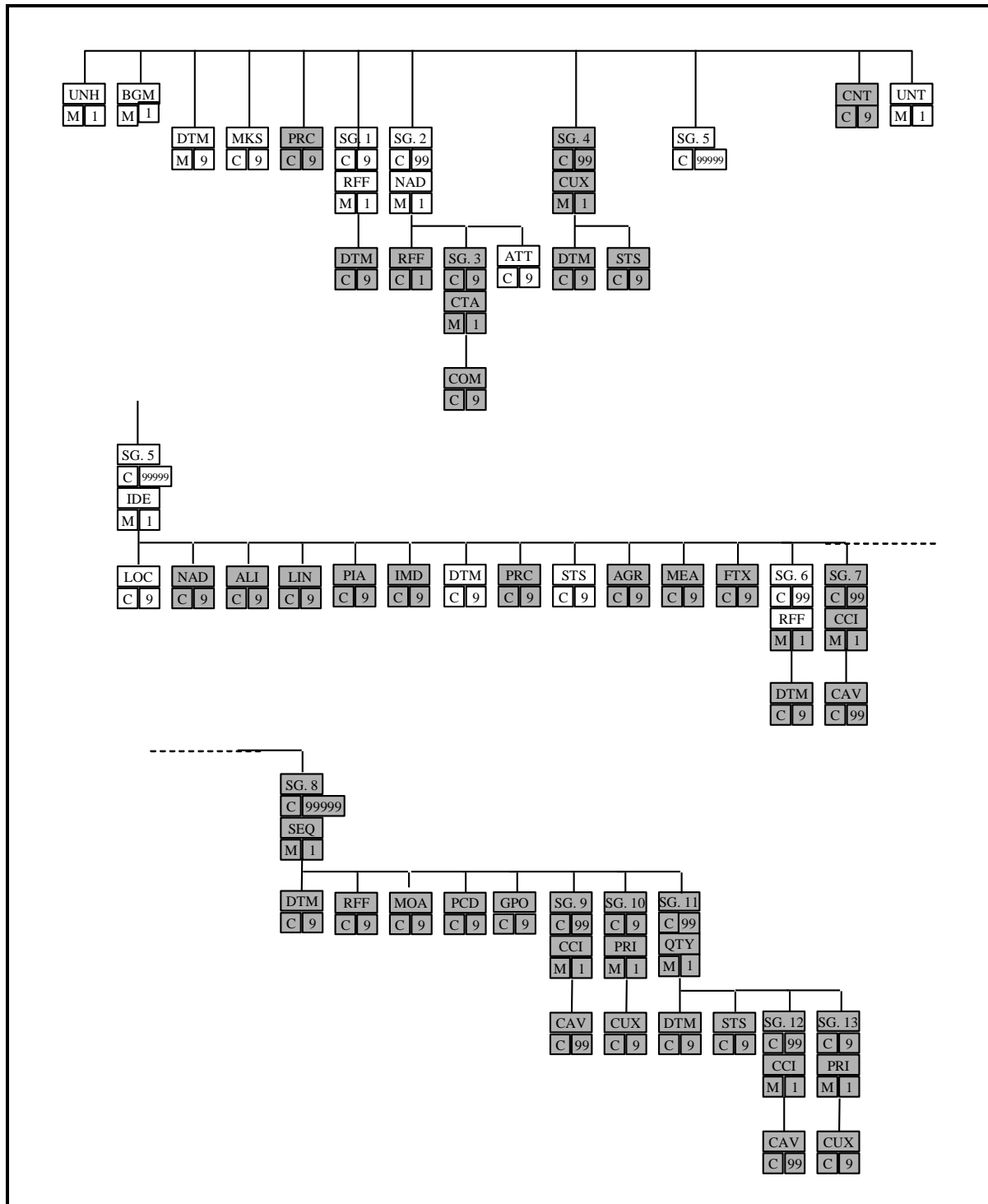


Figure 3 Message diagram for Utility time series message

## Railway Energy Billing UTILTS E23

### 6.5 Segment table

In this chapter the segment table for the Utility time series message (UTILTS) is shown by the way it is described in version D, release 05A of the EDIFACT directory. The segments and segment groups that are used in this IG are shown in bold type.

Pos	Tag Name	S	R
<b>0010</b>	<b>UNH Message header</b>	<b>M</b>	<b>1</b>
<b>0020</b>	<b>BGM Beginning of message</b>	<b>M</b>	<b>1</b>
<b>0030</b>	<b>DTM Date/time/period</b>	<b>M</b>	<b>9</b>
<b>0040</b>	<b>MKS Market/sales channel information</b>	<b>C</b>	<b>9</b>
0050	PRC Process identification	C	9
<b>0060</b>	<b>----- Segment group 1 -----</b>	<b>C</b>	<b>9-----+</b>
<b>0070</b>	<b>RFF Reference</b>	<b>M</b>	<b>1  </b>
0080	DTM Date/time/period	C	9-----+
<b>0090</b>	<b>----- Segment group 2 -----</b>	<b>C</b>	<b>99-----+</b>
<b>0100</b>	<b>NAD Name and address</b>	<b>M</b>	<b>1  </b>
0110	RFF Reference	C	1
<b>0120</b>	<b>ATT Attribute</b>	<b>C</b>	<b>9  </b>
0130	----- Segment group 3 -----	C	9-----+
0140	CTA Contact information	M	1
0150	COM Communication contact	C	9-----++
0160	----- Segment group 4 -----	C	99-----+
0170	CUX Currencies	M	1
0180	DTM Date/time/period	C	9
0190	STS Status	C	9-----+
<b>0200</b>	<b>----- Segment group 5 -----</b>	<b>C</b>	<b>99999-----+</b>
<b>0210</b>	<b>IDE Identity</b>	<b>M</b>	<b>1  </b>
<b>0220</b>	<b>LOC Place/location identification</b>	<b>C</b>	<b>9  </b>
0230	NAD Name and address	C	9
0240	ALI Additional information	C	9
0250	LIN Line item	C	9
0260	PIA Additional product id	C	9
0270	IMD Item description	C	9
<b>0280</b>	<b>DTM Date/time/period</b>	<b>C</b>	<b>9  </b>
0290	PRC Process identification	C	9
<b>0300</b>	<b>STS Status</b>	<b>C</b>	<b>9  </b>
0310	AGR Agreement identification	C	9
0320	MEA Measurements	C	9
0330	FTX Free text	C	9
<b>0340</b>	<b>----- Segment group 6 -----</b>	<b>C</b>	<b>99-----+  </b>
<b>0350</b>	<b>RFF Reference</b>	<b>M</b>	<b>1   </b>
0360	DTM Date/time/period	C	9-----+
0370	----- Segment group 7 -----	C	99-----+
0380	CCI Characteristic/class id	M	1
0390	CAV Characteristic value	C	99-----+
0400	----- Segment group 8 -----	C	99999-----+
0410	SEQ Sequence details	M	1
0420	DTM Date/time/period	C	9
0430	RFF Reference	C	9


## Railway Energy Billing UTILTS E23

0440	MOA Monetary amount	C	9	
0450	PCD Percentage details	C	9	
0460	GPO Geographical position	C	9	
0470	----- Segment group 9 -----	C	99-----+	
0480	CCI Characteristic/class id	M	1	
0490	CAV Characteristic value	C	99-----+	
0500	----- Segment group 10 -----	C	9-----+	
0510	PRI Price details	M	1	
0520	CUX Currencies	C	9-----+	
0530	----- Segment group 11 -----	C	99-----+	
0540	QTY Quantity	M	1	
0550	DTM Date/time/period	C	9	
0560	STS Status	C	9	
0570	----- Segment group 12 -----	C	99-----+	
0580	CCI Characteristic/class id	M	1	
0590	CAV Characteristic value	C	99-----+	
0600	----- Segment group 13 -----	C	9-----+	
0610	PRI Price details	M	1	
0620	CUX Currencies	C	9-----+	
0630	CNT Control total	C	9	
<b>0640</b>	<b>UNT Message trailer</b>	<b>M</b>	<b>1</b>	

## 7 DETAILED DESCRIPTION OF THE MESSAGE

In this chapter all segments and segment groups are specified in detail. In the left column you will find a list of the attributes used.

The EDIFACT segments listed are copies of those defined in the original UN/EDIFACT directory except for data elements defined as conditional (C) which are redefined using the ebIX classification.



MESSAGE: UTILTS

SG 0

Function:

A service segment starting and uniquely identifying a message. The message type code for the Utilities time series message is UTILTS.

Segments:

UNH, BGM, DTM, MKS, SG 2, SG 4

UNH

Message header

Function:

A service segment starting and uniquely identifying a message.

Classification:

Mandatory (M1).

Comments:

Example:

UNH+1+UTILTS:D:05A:UN:R01A'

Message-reference

>

0062

MESSAGE REFERENCE NUMBER

M

an..14

The message reference uniquely identifies the message in the interchange. Typically by using a sequence number that identifies each message in the interchange. The first message will have reference number. 1, the second message will have reference number 2, etc. The reference can be set to 1 in the first message of the next interchange.

Message-type

>

S009

MESSAGE IDENTIFIER

M

0065

Message type identifier

M

an..6

Code: UTILTS

0052

Message type version number

M

an..3

Code: D

0054

Message type release number

M

an..3

Code: 05A

0051

Controlling agency

M

an..2

Code: UN

0057

Association assigned code

R

an..6

Code: R01A

ClassDiagram

Version

>

0068

COMMON ACCESS REFERENCE

X

an..35

S010

STATUS OF THE TRANSFER

X

0070

Sequence message transfer number

X

n..2

0073

First/last seq. mess. transfer. indicator.

X

a1

**BGM** Beginning of message  
**Function:** A segment by which the sender uniquely identifies the Utilities time series message by means of its name and number and when necessary its function.  
**Classification:** Mandatory (M1).  
**Comments:**  
**Example:** BGM+E23::260+SSA1234+9+AB'

Ref.	Name	CL	Form.	Description
Type_Code	C002	DOCUMENT/MESSAGE NAME	R	
	> 1001	Document name code	R an..3	<b>Codes:</b> E23 Request for Metered Data ERR Information on rejection
	1131	Code list identification code	X an..17	
	3055	Code list responsible agency code	R an..3	<b>Codes:</b> 260 ebIX (Ediel)
	1000	Document name	X an..35	
Business-DocumentSet Identification	C106	DOCUMENT/MESSAGE IDENTIFICATION	R	
	> 1004	Document identifier	R an..35	Unique Id. of the message. Shall be unique over time for each party.
	1056	Version identifier	X an..9	
	1060	Revision identifier	X an..6	
Function Code	> 1225	MESSAGE FUNCTION CODE	R an..3	<b>Codes:</b> 9 Original message. 5 Replace of previously sent 1 Cancellation
	> 4343	RESPONSE TYPE CODE	R an..3	<b>Codes:</b> AB Message acknowledgement is required (APERAK). NA No acknowledgement needed

**DTM** Date/time/period

**Function:** A segment specifying general dates related to the whole message and the time zone used in the message. The segment must be specified at least once to specify the message date as allocated by the sender.

**Classification:** Mandatory (M2).

**Comments:**

- Both “137, Message date” and 735, Time zone” are required.
- There shall be only one offset to UTC for each message that covers all dates in the message (not including UNB).
- Its recommended always setting the offset to UTC to zero.

**Example:** DTM+137:200611011241:203'  
DTM+735:?+0000:406'

Date  
Time zone

>

Ref.	Name	CL	Form.	Description
C507	DATE/TIME/PERIOD	M		
2005	Date or time or period function code qualifier	M	an..3	<b>Codes:</b> 137 Message date 735 Offset from Coordinated Universal Time (UTC)
2380	Date or time or period text	R	an..35	Date/time/period
2379	Date or time or period format code	R	an..3	<b>Codes:</b> 203 CCYYMMDDHHmm, (137) 406 ZHHMM, Offset from Coordinated Universal Time (UTC) where Z is plus (+) or minus (-). (735)

**MKS** Market/sales channel information  
**Function:** A segment to specify to which market and/or through which sales distribution channel and/or for which end-use the time series relates.  
**Classification:** Required (R1).  
**Comments:**  
**Example:** MKS+23+E02::260'

Business  
Sector

&gt;

Market  
domain

&gt;

Ref.	Name	Cl.	Form.	Description
7293	SECTOR AREA IDENTIFICATION CODE QUALIFIER	M	an..3	<b>Codes:</b> 23 Electricity supply industry
C332	SALES CHANNEL IDENTIFICATION	M		
3496	Sales channel identifier	R	an..17	<b>Codes:</b> E02 Meter reading phase
1131	Code list identification code	X	an..17	
3055	Code list responsible agency code	R	an..3	<b>Codes:</b> 260 ebIX (Ediel)
1229	ACTION REQUEST/NOTIFICATION DESCRIPTION CODE	X	an..3	

**MESSAGE: UTILTS****SG 1**

**Function:** A group of segments giving references and, where necessary, their dates relating to the whole message.

**Classification:** Optional (O1)

**Comments:**

**Segments:** RFF

**RFF** Reference

**Function:** A segment identifying a reference by its type and number.

**Classification:** Mandatory (M1)

**Comments:**

- This segment is only to be used in an UTILTS that is sent to reject a previous message.
- 1153: specifies the message type of the original message to which the reply is referring.
- 1154: in case of rejection the reference should be made to the message that is being rejected (message number in SG0/BGM/C106 1004)

**Example:** RFF+E23:012345'

Reference to  
original  
message >

Ref.	Name	Cl.	Form.	Description
C506	REFERENCE	M1		
1153	Reference function code qualifier	M	an..3	<b>Code:</b> E23 UTILTS E23
1154	Reference identifier	R	an..35	Reference to original message
1156	Line number	X	an..6	
4000	Reference version identifier	X	an..35	
1060	Revision number	X	an..6	

**MESSAGE: UTILTS****SG 2**

**Function:** A group of segments identifying the parties with associated information relevant to the whole message, such as the sender and the receiver of the message.

**Classification:** Required (R2).

**Comments:** MR and MS are always required

**Segments:** NAD, ATT

**NAD** Name and address

**Function:** A segment for specifying the identification and/or the name and the address of the party, in coded or clear form, and the function relevant to the message. It is recommended that, if possible, only the coded form of the party ID should be specified.

**Classification:** Mandatory (M1).

**Comments:**

- The qualifier MS should be used to identify the party responsible for the data (originator) and the qualifier MR for the final recipient

**Example:** NAD+MR+1234567890123::9'

Receiver  
Sender

Coding  
scheme

>

>

Ref.	Name	Cl.	Form.	Description
3035	PARTY FUNCTION CODE QUALIFIER	M	an..3	<b>Codes:</b> MR Message recipient MS Document/message issuer/sender
C082	PARTY IDENTIFICATION DETAILS	R		
3039	Party identifier	M	an..35	Party identification
1131	Code list identification code	X	an..17	
3055	Code list responsible agency code	R	an..3	<b>Codes:</b> 9 GS1 (EAN, International Article Numbering association) 12 UIC 305 ETSO/EIC (ETSO Identification Code)
C058	NAME AND ADDRESS	X		
3124	Name and address description	X	an..35	
3124	Name and address description	X	an..35	
3124	Name and address description	X	an..35	
3124	Name and address description	X	an..35	
3124	Name and address description	X	an..35	

		C080	PARTY NAME	X		
		3036	Party name	X	an..35	
		3036	Party name	X	an..35	
		3036	Party name	X	an..35	
		3036	Party name	X	an..35	
		3036	Party name	X	an..35	
		3045	Party name format code	X	an..3	
		C059	STREET	X		
		3042	Street and number or post office box identifier	X	an..35	
		3042	Street and number or post office box identifier	X	an..35	
		3042	Street and number or post office box identifier	X	an..35	
		3042	Street and number or post office box identifier	X	an..35	
		3164	CITY NAME	X	an..35	
		C819	COUNTRY SUB-ENTITY DETAILS	X		
		3229	Country sub-entity name code	X	an..9	
		1131	Code list identification code	X	an..17	
		3055	Code list responsible agency code	X	an..3	
		3228	Country sub-entity name	X	an..70	
		3251	POSTAL IDENTIFICATION CODE	X	an..17	
		3207	COUNTRY NAME CODE	X	an..3	
<p><b>ATT</b>                      <b>ATTRIBUTE</b></p> <p><b>Function:</b>              A segment used to identify attributes of the relevant party, such as additional functions of the sender or receiver.</p> <p><b>Classification:</b>        Dependent (D1).</p> <p><b>Comments:</b>              Only used together with message receiver (MR) in the previous NAD segment.</p> <p><b>Example:</b>                ATT+25++MDR::260'</p>						
Ancillary Role	>	<b>Ref.</b>	<b>Name</b>	<b>Cl.</b>	<b>Form.</b>	<b>Description</b>
		9017	ATTRIBUTE FUNCTION CODE QUALIFIER	M	an..3	<b>Codes:</b> 25    Additional function
		C955	ATTRIBUTE TYPE	X		
		9021	Attribute type description code	X	an..17	
		1131	Code list identification code	X	an..17	
		3055	Code list responsible agency code	X	an..3	
		9020	Attribute type description	X	an..70	
		C956	ATTRIBUTE DETAIL	R		
		9019	Attribute description code	R	an..17	<b>Code:</b> MDR   Metered data responsible DS     Distributor
		1131	Code list identification code	X	an..17	
		3055	Code list responsible agency code	R	an..3	<b>Codes:</b> 260   ebIX (Ediel)
		9018	Attribute description	X	an..256	

**MESSAGE: UTILTS****SG 5**

**Function:** A group of segments providing details of the time series and connected technical and/or administrative information. In addition to the time series itself, this includes identification of the time series, associated dates, references, characteristics, etc.

**Classification:** Required (R99999).

**Comments:**

**Segments:** IDE, LOC, LIN, DTM, STS, MEA, SG7

**IDE** Identity

**Function:** A segment identifying a time series, the type of object and the product or service being reported in the time series (e.g. electrical energy, electrical power, water, gas).

**Classification:** Mandatory (M1).

**Comments:** Unique id from the sender of the message. The id may be used to link the response to the original transaction.

**Example:** IDE+24+MD200505832134'

BusinessDoc-  
umentData.  
Identification

>

Ref.	Name	Cl.	Form.	Description
7495	OBJECT TYPE CODE QUALIFIER	M	an..3	<b>Codes:</b> 24 Transaction
C206	IDENTIFICATION NUMBER	R		Business Document data Identification.
7402	Object identifier	M	an..35	
7405	Object identification code qualifier	X	an..3	
4405	Status description code	X	an..3	
C082	PARTY IDENTIFICATION DETAILS	X		
3039	Party identifier	X	an..35	
1131	Code list identification code	X	an..17	
3055	Code list responsible agency code	X	an..3	
4405	STATUS DESCRIPTION CODE	X	an..3	
1222	CONFIGURATION LEVEL NUMBER	X	n..2	
C778	POSITION IDENTIFICATION	X		
7164	Hierarchical structure level identifier	X	an..35	
1050	Sequence position identifier	X	an..10	
C240	CHARACTERISTIC DESCRIPTION	X		
7037	Characteristic description code	X	an..17	
1131	Code list identification code	X	an..17	
3055	Code list responsible agency code	X	an..3	
7036	Characteristic description	X	an..35	

**LOC** Place/location identification  
**Function:** A segment to identify location(s) related to the time series.  
**Classification:** Required (R1).  
**Comments:**  
**Example:** LOC+172+871234567890::12'

Consumption  
Point  
Identification

Ref.	Name	Cl.	Form.	Description
3227	LOCATION FUNCTION CODE QUALIFIER	M	an..3	<b>Codes:</b> 172 Metering point id (EDIFACT term "Reporting location")
C517	LOCATION IDENTIFICATION	R		
3225	Location name code	R	an..35	Consumption point identification European Vehicle identification (12 digits) ) + serial number (1 digit) see <a href="http://ec.europa.eu/transport/rail/interoperability/doc/ope-tsi-en-annex.pdf">http://ec.europa.eu/transport/rail/interoperability/doc/ope-tsi-en-annex.pdf</a>
1131	Code list identification code	X	an..17	
3055	Code list responsible agency code	R	an..3	<b>Codes:</b> 12 UIC
3224	Location name	X	an..256	
C519	RELATED LOCATION ONE IDENTIFICATION	X		
3223	First related location name code	X	an..25	
1131	Code list identification code	X	an..17	
3055	Code list responsible agency code	X	an..3	
3222	First related location name	X	an..70	
C553	RELATED LOCATION TWO IDENTIFICATION	X		
3233	Second related location name code	X	an..25	
1131	Code list identification code	X	an..17	
3055	Code list responsible agency code	X	an..3	
3232	Second related location name	X	an..70	
5479	RELATION CODE	X	an..3	

**DTM** Date/time/period  
**Function:** A segment to specify dates associated with the time series.  
**Classification:** Required (R2).  
**Comments:**

- Time zone is defined in DTM / SG 0.
- The end period should be “exclusive”, e.g. the whole day and night of July 5<sup>th</sup>, 2002 is expressed as 200207050000200207060000.

**Example:** DTM+324:200606130000200606200000:719'

Observation  
Period

Ref.	Name	Cl.	Form.	Description
C507	DATE/TIME/PERIOD	M		
2005	Date or time or period function code qualifier	M	an..3	<b>Codes:</b> 324 Observation (Processing) period
2380	Date or time or period text	R	an..35	Date, time or period
2379	Date or time or period format code	R	an..3	<b>Codes:</b> 719 CCYYMMDDHHmm- CCYYMMDDHHmm, without hyphen (324)

**STS** Status

**Function:** A segment giving the status for the time series being reported, such as metered, estimated or corrected.

**Classification:** Required (R1).

**Comments:** Occurs twice for Negative Response.

- The code “260, Ediel Nordic forum” in DE 3055 shall be used together with “E-codes”.
- C555 only used in combination to “E01, Answer”

**Example:** STS+7++E23::260’

Ref.	Name	CL	Form.	Description
C601 9015	STATUS CATEGORY Status category code	R M	an..3	<b>Code:</b> 7 Transaction E01 Answer
1131 3055	Code list identification code Code list responsible agency code	X X	an..17 an..3	
C555 4405	STATUS Status description code	D M	an..3	
1131 3055 4404	Code list identification code Code list responsible agency code Status description	X X X	an..17 an..3 an..35	
C556 9013	STATUS REASON Status reason description code	R M	an..3	<b>Codes:</b> Reason for transaction (9015 = 7): E23 Periodic Meter Reading Reason for Rejection (9015 = E01): E10 Unknown Consumption Point R01 No data available  <b>Codes:</b> 260 ebIX (Ediel)
1131 3055	Code list identification code Code list responsible agency code	X R	an..17 an..3	
9012	Status reason description	X	an..256	
C556 9013	STATUS REASON Status reason description code	X X	an..3	
1131 3055	Code list identification code Code list responsible agency code	X X	an..17 an..3	
9012	Status reason description	X	an..256	
C556 9013	STATUS REASON Status reason description code	X X	an..3	
1131 3055	Code list identification code Code list responsible agency code	X X	an..17 an..3	
9012	Status reason description	X	an..256	
C556 9013	STATUS REASON Status reason description code	X X	an..3	
1131 3055	Code list identification code Code list responsible agency code	X X	an..17 an..3	
9012	Status reason description	X	an..256	

	9012	Status reason description	X	an..256	
	C556	STATUS REASON	X		
	9013	Status reason description code	X	an..3	
	1131	Code list identification code	X	an..17	
	3055	Code list responsible agency code	X	an..3	
	9012	Status reason description	X	an..256	

**MESSAGE: UTILTS****SG 6**

**Function:** A group of segments for specifying any references and associated dates valid for the current time series.

**Classification:** Conditional (C1)

**Comments:**

**Segments:** RFF, DTM

**RFF** Reference

**Function:** A segment identifying any references related to the current time series.

**Classification:** Mandatory (M1)

**Comments:**

- TN is used for answers/acknowledgements

**Example:** RFF+TN: MD200505832134'

ReferenceTo  
Original  
Business  
Document.  
Identification

>

Ref.	Name	Cl.	Form.	Description
C506	REFERENCE	M1		
1153	Reference function code qualifier	M	an..3	<b>Code:</b> TN Transaction reference number Identification. Reference to original Business Document
1154	Reference identifier	R	an..35	
1156	Line number	X	an..6	
4000	Reference version identifier	X	an..35	
1060	Revision number	X	an..6	

**MESSAGE: UTILTS****SG 0**

**Function:** Summary section  
**Classification:** Mandatory (M1).  
**Comments:**  
**Segments:** UNT

**UNT** Message trailer  
**Function:** A service segment ending a message, giving the total number of segments in the message (including the UNH & UNT) and the control reference number of the message.  
**Classification:** Mandatory (M1).  
**Comments:**  
**Example:** UNT+11+1'

Ref.	Name	Cl.	Form.	Description
0074	NUMBER OF SEGMENTS IN THE MESSAGE	M	n..6	Number of segments in the message, including UNH and UNT.
0062	MESSAGE REFERENCE NUMBER	M	an..14	Control reference number. Equal to 0062 in UNH

## **APPENDIX A – MESSAGE EXAMPLES**

### **A.1 Examples to be added**